



sonjaMAROHN

summer  
2010



Kaffee - Fuchsia 6 - 15



Sand 18 - 28



Original 32 - 34



Blue 36 - 45



Weiss 48 - 50



Schwarz 52 - 58



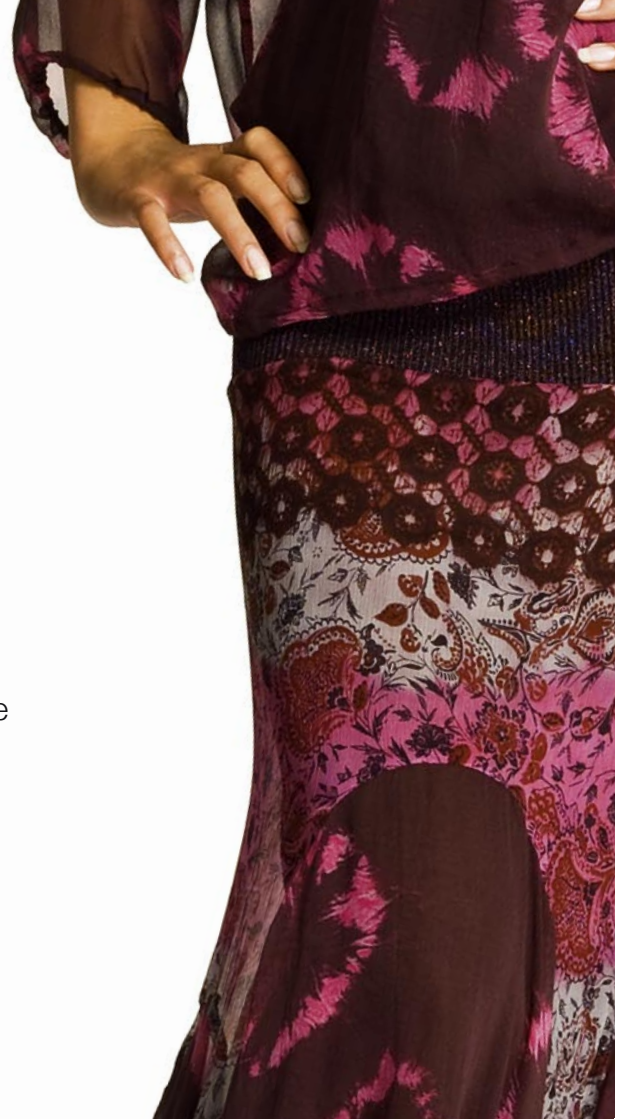
Kaffee - Fuchsia





## Kaffee - Fuchsia

|      |    |        |
|------|----|--------|
| 5325 | TO | top    |
| 5043 | BL | blouse |
| 5056 | RO | skirt  |





## Kaffee - Fuchsia

|      |    |        |
|------|----|--------|
| 5042 | JA | jacket |
| 5228 | TO | top    |
| 5325 | TO | top    |
| 5045 | RO | skirt  |



## Kaffee - Fuchsia

|      |    |          |
|------|----|----------|
| 5012 | JA | jacket   |
| 5325 | TO | top      |
| 5051 | BL | blouse   |
| 5027 | HO | trousers |







## Kaffee - Fuchsia

|      |    |          |
|------|----|----------|
| 5011 | JA | jacket   |
| 5333 | TO | top      |
| 5026 | HO | trousers |
| 5319 | GÜ | belt     |





## Kaffee - Fuchsia

|      |    |       |
|------|----|-------|
| 5008 | MA | coat  |
| 5308 | KL | dress |
| 5319 | GÜ | belt  |





## Kaffee - Fuchsia

5019 TO top

5010 JA jacket

5024 RO skirt





## Kaffee - Fuchsia

5012 JA jacket

5031 KL dress





## Kaffee - Fuchsia

5012 JA jacket  
5031 KL dress







## Kaffee - Fuchsia

5058 KL dress





## Kaffee - Fuchsia

5030 KL dress

5321 GÜ belt



A close-up photograph of a person's waist. They are wearing a tan leather belt with a large, curved metal buckle. The belt is fastened over a textured, woven fabric garment, possibly a vest or a jacket, which has a distinct diamond or grid pattern. The background shows a smooth, light-colored fabric, likely a shirt or blouse, with some folds and shadows. The overall color palette is warm and earthy, dominated by shades of tan, brown, and beige.

sand





## Sand

|      |    |           |
|------|----|-----------|
| 5341 | WE | waistcoat |
| 5099 | TO | top       |
| 5101 | RO | skirt     |
| 5321 | GÜ | belt      |





## Sand

|      |    |       |
|------|----|-------|
| 5353 | TO | top   |
| 5101 | RO | skirt |
| 5318 | TA | bag   |





## Sand

|      |    |        |
|------|----|--------|
| 5097 | JA | jacket |
| 5353 | TO | top    |
| 5101 | RO | skirt  |







## Sand

|      |    |          |
|------|----|----------|
| 5095 | JA | jacket   |
| 5346 | TO | top      |
| 5103 | HO | trousers |





## Sand

|      |    |          |
|------|----|----------|
| 5330 | JA | jacket   |
| 5333 | TO | top      |
| 5103 | HO | trousers |





## Sand

5106 KL dress





## Sand

5219 PU pullover  
5300 RO skirt







## Sand

- 5110 JA jacket
- 5055 BL blouse
- 5325 TO top
- 5118 HO trousers





## Sand

|      |    |          |
|------|----|----------|
| 5112 | JA | jacket   |
| 5325 | TO | top      |
| 5118 | HO | trousers |
| 5326 | TU | scarf    |





## Sand

|      |    |        |
|------|----|--------|
| 5110 | JA | jacket |
| 5325 | TO | top    |
| 5055 | BL | blouse |
| 5114 | RO | skirt  |





## Sand

|      |    |          |
|------|----|----------|
| 5111 | JA | jacket   |
| 5345 | TO | top      |
| 5117 | HO | trousers |







## Sand

5121 KL dress

5319 GÜ belt





Original

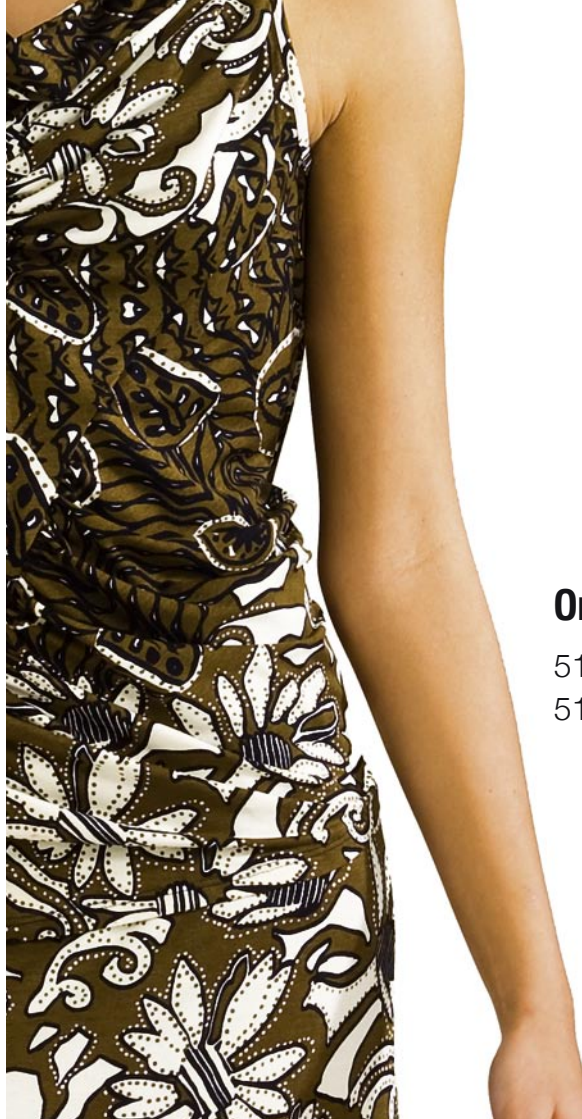


## Original

5208 TO top  
5212 HO trousers







**Original**

5195 TO top  
5198 RO skirt







**Original**

5205 KL dress





erie



## Blue

|      |    |        |
|------|----|--------|
| 5075 | JA | jacket |
| 5325 | TO | top    |
| 5055 | BL | blouse |







## Blue

|      |    |        |
|------|----|--------|
| 5325 | TO | top    |
| 5086 | BL | blouse |
| 5321 | GÜ | belt   |







## Blue

5350 JA jacket  
5094 KL dress





## Blue

|      |    |          |
|------|----|----------|
| 5084 | JA | jacket   |
| 5351 | TO | top      |
| 5091 | HO | trousers |
| 5322 | GÜ | belt     |





## Blue

|      |    |          |
|------|----|----------|
| 5089 | TO | top      |
| 5326 | TO | top      |
| 5092 | HO | trousers |
| 5082 | MA | coat     |







**Blue**

5080 KL dress





## Blue

|      |    |        |
|------|----|--------|
| 5022 | TO | top    |
| 5075 | JA | jacket |
| 5077 | RO | skirt  |





## Blue

|      |    |           |
|------|----|-----------|
| 5226 | TO | top       |
| 5341 | WE | waistcoat |
| 5078 | HO | trousers  |







## Blue

|      |    |          |
|------|----|----------|
| 5326 | TU | scarf    |
| 5073 | JA | jacket   |
| 5078 | HO | trousers |





## Blue

|      |    |          |
|------|----|----------|
| 5346 | TO | top      |
| 5074 | JA | jacket   |
| 5079 | HO | trousers |





Weiss





## Weiss

|      |    |        |
|------|----|--------|
| 5288 | TO | top    |
| 5150 | JA | jacket |
| 5155 | RO | skirt  |





## Weiss

|      |    |          |
|------|----|----------|
| 5210 | PU | pullover |
| 5151 | JA | jacket   |
| 5058 | HO | trousers |





**Weiss**

5161 KL dress







Schwarz



## Schwarz

5186 OW overall





## Schwarz

- |      |    |        |
|------|----|--------|
| 5174 | TO | top    |
| 5165 | JA | jacket |
| 5166 | RO | skirt  |



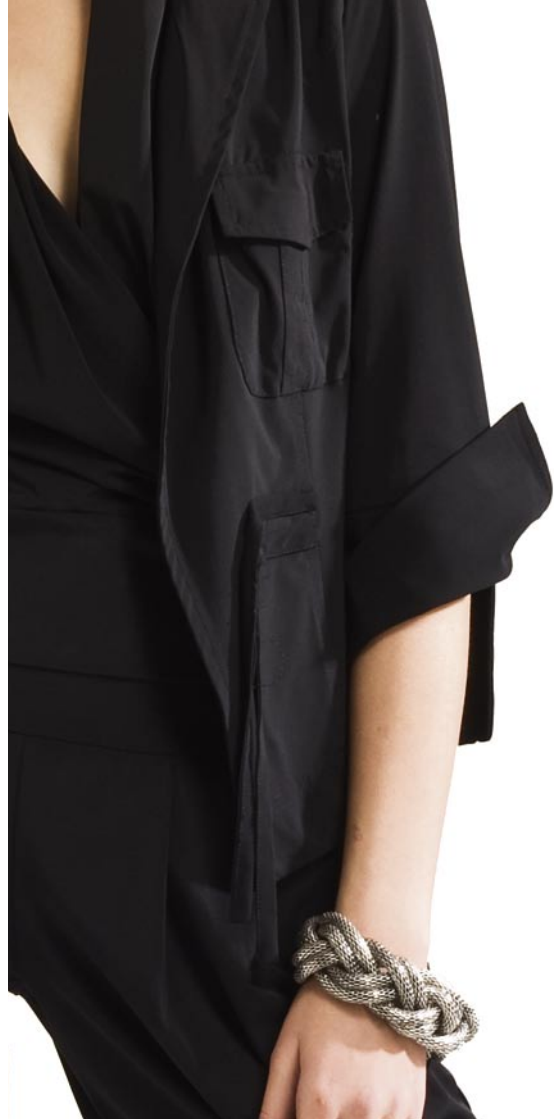


## Schwarz

|      |    |        |
|------|----|--------|
| 5228 | TO | top    |
| 5168 | JA | jacket |
| 5177 | RO | skirt  |







## Schwarz

5175 TO top  
5173 JA jacket  
5179 HO trousers





## Schwarz

|      |    |          |
|------|----|----------|
| 5223 | PU | pullover |
| 5171 | MA | coat     |
| 5180 | HO | trousers |





## Schwarz

|      |    |          |
|------|----|----------|
| 5217 | PU | pullover |
| 5305 | HO | trousers |
| 5320 | GÜ | belt     |





## Schwarz

|      |    |          |
|------|----|----------|
| 5351 | TO | top      |
| 5215 | JA | jacket   |
| 5303 | HO | trousers |





Farben können technisch bedingt vom Original abweichen.



# sonjaMAROHN

Sonja Marohn GmbH  
Neue Weinsteige 66  
70180 Stuttgart  
Deutschland

Tel.: +49 711 60 17 36 36  
Fax +49 711 60 17 36 35  
Mail [info@sonjamarohn.de](mailto:info@sonjamarohn.de)  
[www.sonjamarohn.de](http://www.sonjamarohn.de)